

98-365 Dumps

Windows Server Administration Fundamentals

<https://www.certleader.com/98-365-dumps.html>



NEW QUESTION 1

Which type of additional drivers does the Windows 7 installation phase prompt for?

- A. Video
- B. Network
- C. Use
- D. Storage

Answer: D

Explanation:

You might be prompted for the mass storage device driver. When installing Windows 7, you might see one of the following error messages:

* No drives were found. Click Load Driver to provide a mass storage driver for installation.

* Windows Setup could not configure Windows to run on this computer's hardware.

Reference: <http://windows.microsoft.com/en-us/windows7/windows-7-installation-problem-hard-drive-not-found>

NEW QUESTION 2

Disk mirroring occurs when data is:

- A. Duplicated on the same disk.
- B. Backed up by using parity.
- C. Duplicated on separate disks.
- D. Split between disks.

Answer: C

NEW QUESTION 3

You notice frequent writes to the page file.

Which should you monitor to determine the cause?

- A. CPU
- B. RAM
- C. Network
- D. Hard disk

Answer: B

Explanation:

When the RAM is full the page file is used as virtual RAM.

NEW QUESTION 4

One advantage of a SAN is that it:

- A. Can be located either inside or outside the server.
- B. Provides USB and Firewire connectivity.
- C. Consolidates storage space for servers.
- D. Encrypts all files.

Answer: C

Explanation:

A storage area network (SAN) is a dedicated network that provides access to consolidated, block level data storage.

NEW QUESTION 5

You have an Active Directory infrastructure that contains one domain and seven domain controllers. How many forests can you have without creating any trusts?

- A. 1
- B. 7
- C. 8

Answer: B

Explanation:

In a Windows Server 2003 forest, you can link two disjointed Windows Server 2003 forests together to form a one-way or two-way, transitive trust relationships. A two-way, forest trust is used to form a transitive trust relationship between every domain in both forests.

NEW QUESTION 6

What are two functions of the Group Policy loopback feature? (Choose two.)

- A. Apply Group Policy Objects for only the current site.
- B. Apply Group Policy Objects that depend only on the computer the user logs on to.
- C. Apply only the local computer Group Policy Object.
- D. Give higher precedence to computer policy over user policy.

Answer: BD

Explanation:

Loopback processing of Group Policy has two different modes, Replace and Merge.

* (B) Replace mode replaces User Configuration with the one applied to the Computer.

* (D) In Merge mode, if there is a conflict, for example two policies provide different values for the same configuration setting, the Computer's policy has more privilege compared to the user policy.

Reference: <http://kudratsapaev.blogspot.se/2009/07/loopback-processing-of-group-policy.html>

NEW QUESTION 7

Your backup plan calls for a full backup every Sunday. Every other day of the week, you need to back up only the changes since the last full backup.

Which backup type should you use for Tuesday?

- A. Daily
- B. Normal
- C. Copy
- D. Differential

Answer: D

NEW QUESTION 8

You need to limit what a service can access. You should change the service's:

- A. Dependencies
- B. Status
- C. Startup type
- D. Logon options

Answer: D

Explanation:

Logon options include:

* Log on as: No change

Use this setting to keep the service's logon credentials as previously configured.

* Log on as: Local System account

Use this setting to change the service's logon credentials to the Local System account.

* Log on as: This account

Use this setting to change the service's logon credentials to a specific local or domain user. This account and Password settings become available once you click this option.

NEW QUESTION 9

You need to find a list of specific events. What should you do?

- A. Export the events to a .doc file.
- B. Clear the log by saving it.
- C. Filter by creating a custom view.
- D. Use the Search menu option.

Answer: C

Explanation:

Quickly Filter Event Logs in Windows Server 2008

The Event Viewer automatically creates several filtered views of the event logs. Filtered views are listed under the Custom Views node.

NEW QUESTION 10

An external storage unit that is self-contained and provides shared file-level access is referred to as:

- A. Small Computer System Interface (SCSI).
- B. Storage Area Network (SAN).
- C. Network Attached Storage (NAS).
- D. Direct Attached Storage (DAS).

Answer: C

Explanation:

Network-attached storage (NAS) is file-level computer data storage connected to a computer network providing data access to a heterogeneous group of clients. NAS not only operates as a file server, but is specialized for this task either by its hardware, software, or configuration of those elements. NAS is often manufactured as a computer appliance – a specialized computer built from the ground up for storing and serving files – rather than simply a general purpose computer being used for the role.

NEW QUESTION 10

The owner of Fourth Coffee wants to add a new computer to the company network. The owner configures the Host Address for the computer but still cannot connect to the network.

Which component should the owner use to connect to the network?

- A. DNS Server
- B. DHCP address
- C. Subnet mask
- D. Domain name

Answer: C

Explanation:

The second item the subnet mask is missing here. It is required for TCP/IP to work.

Reference: Understanding TCP/IP addressing and subnetting basics <https://support.microsoft.com/en-us/kb/164015>

NEW QUESTION 15

Which task can you accomplish by using Organizational Units?

- A. Apply shared folder permissions to users
- B. Place different domains in a centralized manageable environment
- C. Create a secondary Active Directory
- D. Logically represent a hierarchical structure of your company

Answer: D

Explanation:

A particularly useful type of directory object contained within domains is the organizational unit. Organizational units are Active Directory containers into which you can place users, groups, computers, and other organizational units. An organizational unit cannot contain objects from other domains.

An organizational unit is the smallest scope or unit to which you can assign Group Policy settings or delegate administrative authority. Using organizational units, you can create containers within a domain that represent the hierarchical, logical structures within your organization.

NEW QUESTION 17

This question requires that you evaluate the underlined text to determine if it is correct. You need to troubleshoot network environment problems. First, you define the issues that

are most likely causing the symptoms. Then you eliminate each issue until the symptoms disappear.

This approach is referred to as "performance" troubleshooting.

Select the correct answer if the underlined text does not make the statement correct. Select "No change is needed" if the underlined text makes the statement correct.

- A. Systematic
- B. Specific
- C. Trial and error
- D. No change is needed

Answer: A

Explanation:

The ability to troubleshoot effectively reduces downtime and increases safety.

A Systematic approach brings efficiencies to the process of troubleshooting. Preparation

Step 1: Observe Behavior

Step 2: Define Problem Area Step 3: Identify Possible causes

Step 4: Determine Most Probable cause Step 5: Test and Repair

Follow-up

Reference: <http://www.troubleshootingskills.com/how-it-works/systematic-approach/>

NEW QUESTION 21

What is the minimum number of disks required for RAID 5?

- A. 1
- B. 2
- C. 3
- D. 5

Answer: :C

Explanation:

You would need two disks for data and one for parity.

NEW QUESTION 22

Services that are required to enable another service to run are referred to as service:

- A. Roots
- B. Prerequisites
- C. Dependencies
- D. Parents
- E. Hosts

Answer: C

Explanation:

Some services have dependency services that do not start until their dependency services start first.

NEW QUESTION 27

Distributed File System (DFS) is used to:

- A. Delegate permissions to a global distribution group.

- B. Implement parity.
- C. Group shared folders from different servers.
- D. Configure spanned and extended volumes.

Answer: C

Explanation:

Distributed File System (DFS) is a set of client and server services that allow an organization using Microsoft Windows servers to organize many distributed SMB file shares into a distributed file system. DFS provides location transparency and redundancy to improve data availability in the face of failure or heavy load by allowing shares in multiple different locations to be logically grouped under one folder, or DFS root.

NEW QUESTION 30

This question requires that you evaluate the underlined text to determine if it is correct.

The minimum permission needed to delete other users' documents from a print queue is "Print".

Select the correct answer if the underlined text does not make the statement correct. Select 'No change is needed' if the underlined text makes the statement correct.

- A. Manage Documents
- B. Manage Printers
- C. Deny
- D. No change is needed

Answer: A

Explanation:

Manage documents. If you have this permission, you can manage all jobs for a printer that are waiting in the print queue, including documents or files that are being printed by other users.

Incorrect:

Not D: With print permissions you can only delete your own documents.

Reference: <http://windows.microsoft.com/en-us/windows-vista/what-are-printer-permissions>

NEW QUESTION 34

Which RAID level can consist of two disks and provides redundancy?

- A. RAID 0
- B. RAID 1
- C. RAID 5
- D. RAID 10

Answer: B

NEW QUESTION 35

What is required to create a volume mount point?

- A. A dynamic disk
- B. RAID 1 implementation
- C. An NTFS file system volume or partition
- D. Extended volumes

Answer: C

Explanation:

A volume mount point can be placed in any empty folder of the host NTFS volume.

NEW QUESTION 40

Power On Self Test (POST) runs when a computer first boots. Which component software issues this test?

- A. Complementary Metal Oxide Semiconductor
- B. Northbridge On Board Chip
- C. Basic Input/Output System
- D. Southbridge On Board Chip

Answer: C

Explanation:

The four main functions of a PC BIOS (Basic Input/Output System).

POST - Test the computer hardware and make sure no errors exist before loading the operating system. Additional information on the POST can be found on our POST and Beep Codes page.

Bootstrap Loader - Locate the operating system. If a capable operating system is located, the BIOS will pass control to it.

BIOS drivers - Low level drivers that give the computer basic operational control over your computer's hardware.

BIOS or CMOS Setup- - Configuration program that allows you to configure hardware settings including system settings such as computer passwords, time, and date.

Reference: <http://www.computerhope.com/jargon/b/bios.htm>

NEW QUESTION 41

This question requires that you evaluate the underlined text to determine if it is correct. Settings from the "Local" Group Policy Object are processed last during logon.

Select the correct answer if the underlined text does not make the statement correct. Select 'No change is needed' if the underlined text makes the statement correct.

- A. Site
- B. Organizational Unit
- C. Domain
- D. No change is needed.

Answer: B

Explanation:

Group Policy settings are processed in the following order:

? Local Group Policy object

- 2. Site
- 3. Domain
- 4. Organizational Unit

Reference: Group Policy processing and precedence <https://technet.microsoft.com/en-us/library/cc785665%28v=ws.10%29.aspx>

NEW QUESTION 44

You manage a Workgroup. You need to create a group for print administrators.

Which type of group should you create?

- A. Domain Local group
- B. Local group
- C. Global group
- D. Universal group

Answer: B

Explanation:

Many organizations deploy Windows servers and workstations in workgroup configurations and for these organizations, local group policies can play a vital role in simplifying Windows system administration.

Read more at http://tech.sportstoday.us/windows_server/windows-server-2008-r2---planning-workgroup-and-standalone-local-group-policy-configuration.aspx#iV1QJMxpiO0FVQyk.99

NEW QUESTION 48

Which tool would you use to retrieve detailed information about a significant occurrence in a computer system?

- A. Event Viewer
- B. System Information
- C. System Monitor
- D. Resource Monitor

Answer: A

NEW QUESTION 49

You are an IT technician for a company that has an environment consisting entirely of Windows 2008 Server R2 and Windows 7 laptops.

You need to establish a secure method that allows employees to work remotely but still have access to the internal network resources.

What are two possible ways to achieve this goal? (Choose two.)

- A. Offline Files
- B. DirectAccess
- C. Network Access Protection (NAP)
- D. Virtual Private Network (VPN)
- E. DFS Namespace

Answer: BD

Explanation:

B: DirectAccess, also known as Unified Remote Access, is a VPN-like technology that provides intranet connectivity to client computers when they are connected to the Internet.

D: The remote users can get secure remote access through VPN.

Reference: <http://en.wikipedia.org/wiki/DirectAccess>

NEW QUESTION 54

To enable enhanced keyboard and mouse functions for a Hyper-V virtual machine, you need to install:

- A. Hyper-V Integration Components.
- B. Keyboard and mouse drivers.
- C. Microsoft Updates.
- D. Hyper-V Server.

Answer: A

Explanation:

To get a virtual machine (VM) to work properly, it's critical to install the Hyper-V integration components. These integration components install agents into a VM that enable a host to successfully back up a VM, recognize when it has gone down, copy and paste data into and out of a VM, and synchronize its clock to the host. These components are important to processing a VM's workload: In effect, their installation reconfigures an operating system to make it "aware" that it has been virtualized, resulting in an "enlightened" OS.

NEW QUESTION 56

HOTSPOT

For each of the following statements, select Yes if the statement is true. Otherwise, select No. Each correct selection is worth one point.

Answer Area

	Yes	No
A forest is a complete instance of Active Directory.	<input type="radio"/>	<input type="radio"/>
A leaf can have child objects.	<input type="radio"/>	<input type="radio"/>
A domain is a logical structure used for delegating authority over a collection of objects.	<input type="radio"/>	<input type="radio"/>

- A. Mastered
- B. Not Mastered

Answer: A

Explanation:

Answer Area

	Yes	No
A forest is a complete instance of Active Directory.	<input checked="" type="radio"/>	<input type="radio"/>
A leaf can have child objects.	<input type="radio"/>	<input checked="" type="radio"/>
A domain is a logical structure used for delegating authority over a collection of objects.	<input checked="" type="radio"/>	<input type="radio"/>

NEW QUESTION 58

To protect a server in case of a blackout, you should use a/an:

- A. Uninterruptible Power Supply.
- B. Dedicated surge protector.
- C. Power Supply Unit.
- D. Redundant power supply.
- E. Hot-swappable power supply.
- F. Line conditioner.

Answer: A

NEW QUESTION 59

The University Chess Club has a single Windows Server 2008 R2 server. The server has 12 GB of RAM and 1TB of disk space on a RAID 5 array. Using this server, you need to install two separate instances of Windows Server 2008 R2: one to act as a web server and one to act as a database server. Which Windows Server 2008 R2 role or feature provides this capability?

- A. Windows Deployment Services
- B. Hyper-V
- C. Windows System Resource Manager
- D. Windows Internal Database

Answer: A

Explanation:

Hyper-V can create virtual machines on x86-64 systems. Starting with Windows 8, Hyper-V supersedes Windows Virtual PC as the hardware virtualization component of the client editions of Windows NT. A server computer running Hyper-V can be configured to expose individual virtual machines to one or more networks.

NEW QUESTION 60

Which is used to verify that a secure Web site is legitimate?

- A. Active Directory
- B. Enterprise trust
- C. Private key
- D. Digital certificate

Answer: D

NEW QUESTION 63

You need to secure a server that you have been working on without disrupting the work of other employees in your company. What should you do?

- A. Log off the server
- B. Hibernate the server
- C. Restart the server
- D. Shut down the server

Answer: A

NEW QUESTION 68

What is required for a computer to print to either a local or a network printer?

- A. 500 GB of free hard disk space
- B. Printer Device Drivers
- C. 1 GB of RAM
- D. Administration tools

Answer: B

NEW QUESTION 71

This question requires that you evaluate the underlined text to determine if it is correct. "Hardware-based RAID" uses system processing resources.

Select the correct answer if the underlined text does not make the statement correct. Select "No change is needed" if the underlined text makes the statement correct.

- A. Windows-based RAID
- B. RAID 10
- C. RAID 6
- D. No change is needed.

Answer: A

NEW QUESTION 72

You need to control which Microsoft Office updates are automatically deployed to client computers. Which tool should you use?

- A. Microsoft Office SharePoint Services (MOSS)
- B. Windows Server Update Services (WSUS)
- C. Windows Update
- D. Microsoft Office Update

Answer: B

Explanation:

Windows Server Update Services (WSUS) enables information technology administrators to deploy the latest Microsoft product updates to computers that are running the Windows operating system. By using WSUS, administrators can fully manage the distribution of updates that are released through Microsoft Update to computers in their network.

NEW QUESTION 73

You need to install storage device drivers for a Windows boot partition. When should you do this?

- A. After you have started Windows for the first time
- B. Before creation of the RAID array
- C. During the post-boot phase
- D. During the installation phase

Answer: D

Explanation:

Example:

During the first phase of the Windows XP installation, Setup displays the following message at the bottom of the screen:

Press F6 if you have to install a third-party SCSI or RAID driver.

Press F6 and then follow the instructions to install a mass-storage device driver from your Original Equipment Manufacturer (OEM).

NEW QUESTION 75

Your network includes Windows Server 2003 and Windows Server 2008 domain controllers. You need to ensure that group policy change are applied immediately. Which tool should you use on the client computer?

- A. Groupware
- B. Windows update
- C. GPUpdate
- D. Policy Editor

Answer: C

Explanation:

GPUpdate
Refreshes local and Active Directory-based Group Policy settings, including security settings.

NEW QUESTION 78

Which technology uses digital certificates for secure communications over the Internet?

- A. Fully Qualified Domain Name (FQDN)
- B. Internet Service Manager (ISM)
- C. Secure Sockets Layer (SSL)
- D. File Transfer Protocol (FTP)

Answer: C

NEW QUESTION 80

Which two files are executed so that a Windows 2008 R2 server boots into the operating system? (Choose two.)

- A. winload.exe
- B. ntldr.exe
- C. bootmgr.exe
- D. boot.ini

Answer: AC

Explanation:

A: The Windows Boot Manager invokes winload.exe—the operating system boot loader—to load the operating system kernel executive (ntoskrnl.exe) and core device drivers. In that respect, winload.exe is functionally equivalent to the operating system loader function of NTLDR in prior versions of Windows NT.

C: Windows Vista and later operating systems replaced the NTLDR with the Windows Boot Manager (BOOTMGR). The BOOTMGR file is located in the 100 MB system partition automatically created during the Window 7 and Server 2008 R2 installation. In Windows Vista and Server 2008 the file is located in the System Partition. Once the computer is started the boot sector loads the BOOTMGR which in turn looks for an active partition.

Incorrect:

Not B, not D: In legacy operating systems the boot sector (boot strap loader) loads the NTLDR that would then look for the BOOT.INI.

Reference: http://en.wikipedia.org/wiki/Windows_Vista_startup_process

NEW QUESTION 83

Which Hyper-V network type shares the host's physical network adapter?

- A. External
- B. Public
- C. Private
- D. Internal

Answer: A

Explanation:

For Hyper-V host networking, the most common option is to create an external access virtual switch. This allows VMs on the host to access other systems on a traditional VLAN or standard switched network.

NEW QUESTION 85

You need to automate the installation of Windows Server 2008 on several servers. What should you use?

- A. unattendinstall.exe
- B. Microsoft Software Installer (MSI)
- C. Windows Installer Service
- D. Windows Deployment Services (WDS)

Answer: :D

Explanation:

Windows Deployment Services is the updated and redesigned version of Remote Installation Services (RIS). Windows Deployment Services enables you to deploy Windows operating systems over the network, which means that you do not have to install each operating system directly from a CD or DVD.

NEW QUESTION 88

This question requires that you evaluate the underlined text to determine if it is correct.

"Windows Deployment Services (WPS)" allows you to automate the installation of Windows Server 2008 on several servers.

Select the correct answer if the underlined text does not make the statement correct. Select 'No change is needed' if the underlined text makes the statement correct.

- A. Microsoft Software Installer (MSI)
- B. Unattendinstall.exe
- C. Windows Installer Service
- D. No change is needed

Answer: D

Explanation:

Windows Deployment Services (WDS) enables you to deploy Windows operating systems over the network, which means that you do not have to install each

operating system directly from a CD or DVD.

Benefits of Windows Deployment Services include:

- * Supports deploying images for mixed environments including Windows 7 and Windows Server 2008 R2 through Windows 8.1 and Windows Server 2012 R2.
- * Allows network-based installation of Windows operating systems, which reduces the complexity and cost when compared to manual installations.

Reference: Windows Deployment Services Overview <https://technet.microsoft.com/en-us/library/hh831764.aspx>

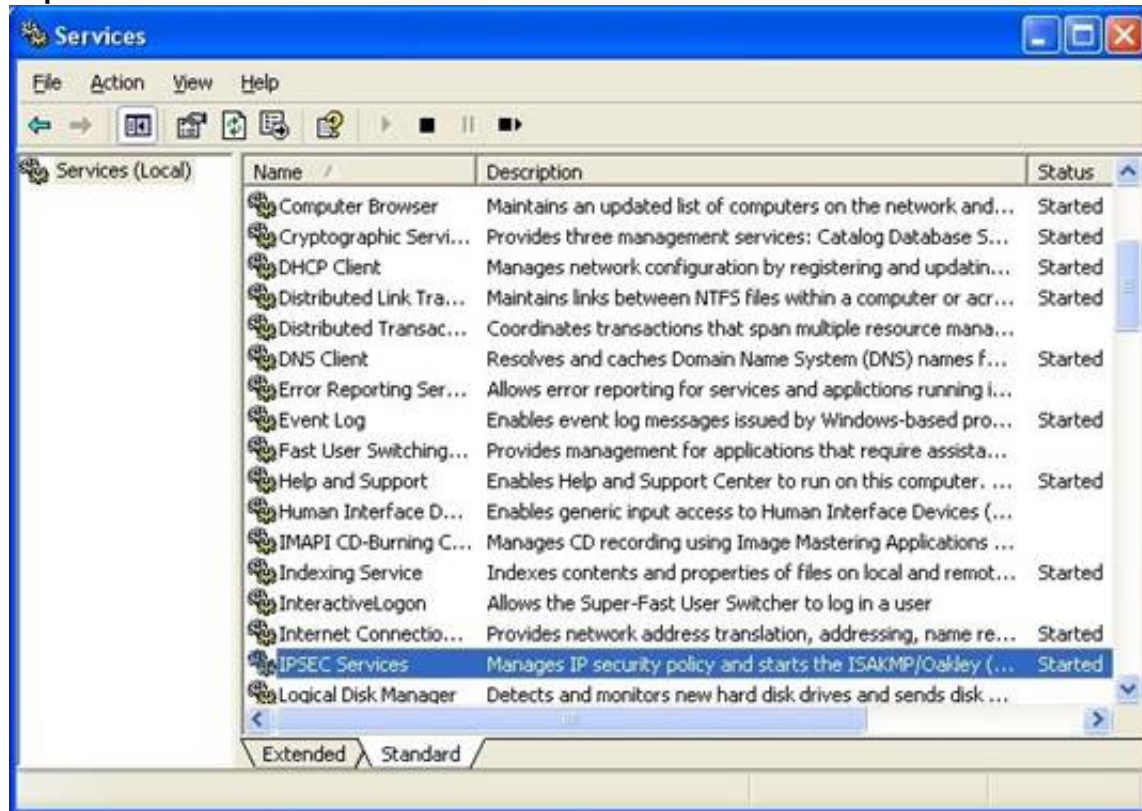
NEW QUESTION 89

You are using the Services Management Console. Which term is used to describe a service that is running?

- A. Started
- B. Activated
- C. Engaged
- D. Working

Answer: A

Explanation:



<http://www.ucs.cam.ac.uk/docs/leaflets/g53/vpn1.jpg>

NEW QUESTION 93

Which two specifications are included in Microsoft's hardware requirements for Windows Server? (Choose two)

- A. USB ports
- B. RAM
- C. Processor speed
- D. Disk I/O

Answer: BC

Explanation:

Example:

System Requirements for Windows Server 2012 Essentials

- * CPU socket
 - 1.4 GHz (64-bit processor) or faster for single core
 - 1.3 GHz (64-bit processor) or faster for multi-core
- * Memory (RAM) 2 GB
- * Hard disk
 - * 160 GB hard disk with a 60 GB system partition

NEW QUESTION 97

.....

Thank You for Trying Our Product

* 100% Pass or Money Back

All our products come with a 90-day Money Back Guarantee.

* One year free update

You can enjoy free update one year. 24x7 online support.

* Trusted by Millions

We currently serve more than 30,000,000 customers.

* Shop Securely

All transactions are protected by VeriSign!

100% Pass Your 98-365 Exam with Our Prep Materials Via below:

<https://www.certleader.com/98-365-dumps.html>